
THE SOCIAL SCIENCE RESEARCH AND INSTRUCTIONAL COUNCIL

2015-2016 Annual Report

SEPTEMBER 30, 2016
CALIFORNIA STATE UNIVERSITY, LONG BEACH
1250 Bellflower Boulevard, Long Beach, California 90840
www.ssrc.org

Contents

Introduction	2
Vision.....	3
Mission.....	3
Supporting CSU Faculty in Research and Instruction	4
Structure and Governance.....	4
Figure 1. SSRIC Organization and Services Chart.....	4
SSRIC Campus Representatives	5
SSRIC Committees.....	6
Supporting Students in Social Sciences	7
Student Research Conference.....	7
Providing Social Science Resources	8
Databases.....	8
Instructional Materials and Workshops.....	8
Faculty Research.....	9
Forums for Sharing Information.....	9
Financials.....	10
Budget Overview	10
Figure 2. SSRIC 2015-2016 Budget Distribution1	10
Subscription Fees	10
Table 1. SSRIC 2015-2016 Budget: Expenditures	11
Table 2. CSU Campus Subscription Fees 2010-2016	12
Baseline Indicators of Activities and Outcomes.....	13
Table 3. Faculty Support: Activities and Outcomes.....	13
Table 4. Student Success: Activities and Outcomes.....	14
Table 5. Faculty Support and Student Success: Activities and Outcomes.....	15

**California State University
Social Science Research and Instructional Council
2015-2016 Annual Report**

Introduction

The SSRIC (Council) is organized around scholarly, creative, research and educational activities that combine the interests and expertise of individual faculty, staff and students across the California State University System. The Council is dedicated to assisting students and faculty in their use of social science data for undergraduate and graduate classroom training and research.

Twenty-two (22) campuses jointly participate and share in the cost of database subscriptions, services and governance. The California State University campuses include: Bakersfield, Channel Islands, Chico, Dominguez Hills, East Bay, Fresno, Fullerton, Humboldt, Long Beach, Los Angeles, Monterey Bay, Northridge, Pomona, Sacramento, San Bernardino, San Diego, San Francisco, San Jose, San Luis Obispo, San Marcos, Sonoma, and Stanislaus. The CSU Maritime Academy does not participate, in part, to its limited social science curriculum.

On November 6, 2015, the Council submitted its request to be officially recognized as a permanently structured, systemwide multi-campus affinity group (per CSU Executive Order 1103). The Council's proposal received the support of the 22 campus Presidents with President Jane Close Conoley, California State University, Long Beach, serving as the Council's lead President. On December 18, 2015, the Office of the Chancellor granted conditional authorization for the SSRIC to continue its current operations and to prepare a five-year strategic plan by April 1, 2016. Subsequently, the Council was formally authorized as a sanctioned entity representing CSU interests and resources in the social sciences on May 26, 2016. The authorization is through March 31, 2021 and can be renewed for an additional five (5) year period with the submission of an updated strategic plan on or before November 1, 2020.

This Council Annual Report is its first as an officially recognized CSU Affinity Group.

Submitted by:

Dr. Stafford G. Cox
SSRIC Chair 2015-2016
Academic Technology Services
California State University, Long Beach
1250 Bellflower Boulevard
Long Beach, California 90840

Vision

SSRIC seeks to enable faculty and students to advance their knowledge and skills in social science by providing access to major database archival resources, by supporting state-of-the art research and instructional tools necessary to excel and maintain the best learning and teaching environments, and by enhancing faculty and student opportunities in their intellectual exploration of the social sciences.

Mission

Founded in 1972, the Social Science Research and Instructional Council (SSRIC) is the oldest of the disciplinary councils in the California State University system. Members of Council promote the study of social sciences through many of the activities listed below.

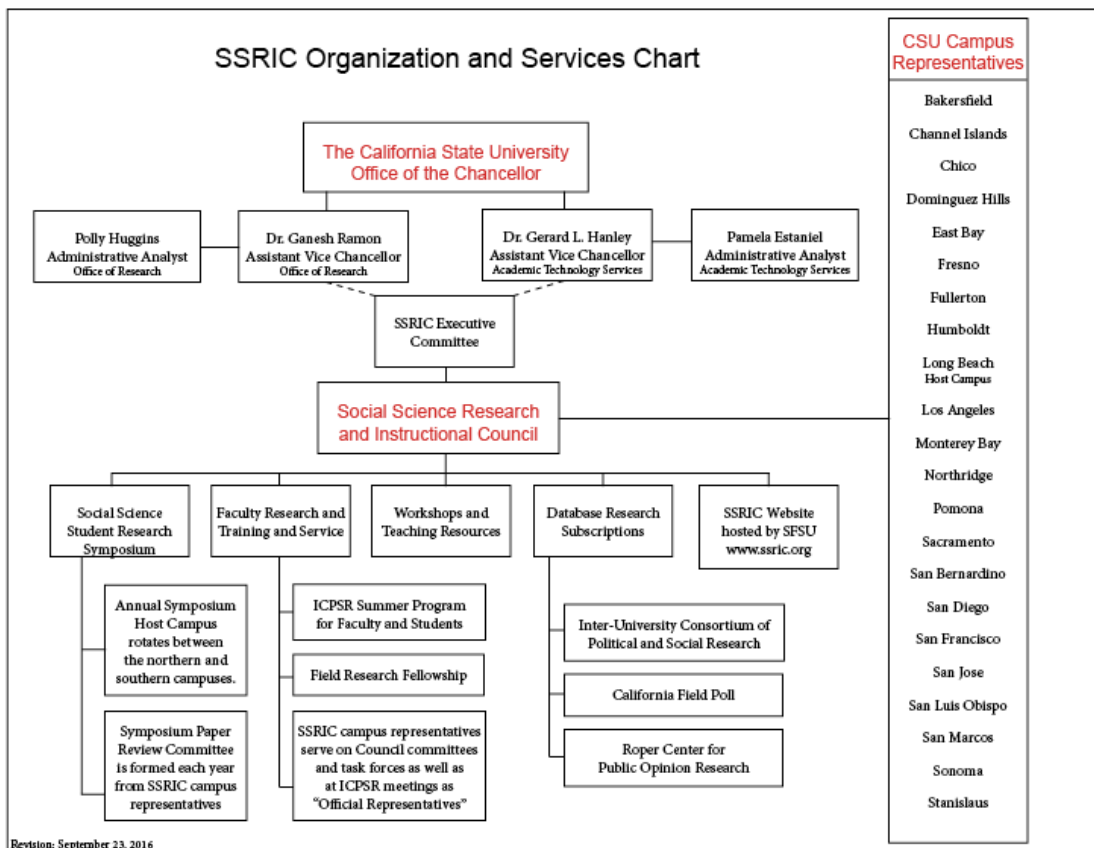
- Facilitates access to social science database subscriptions and online resources, including instructionally-related and research-related materials (www.ssrlic.org)
- Works with the Chancellor's Office and data providers to obtain these high-quality resources at a reasonable cost to the campuses
- Provides opportunities for training and professional development of faculty, staff, and students through teaching, research, scholarly, and creative activities
- Promotes quantitative social science research by students via its annual SSRIC student research symposium
- Enhances student learning by raising the academic experience of students through its online resources and database subscriptions
- Provides assistance to campuses in developing, initiating and conducting training programs
- Identifies and promulgating successful computerized social science projects in the CSU curriculum
- Supports a forum for sharing information about social science data and computer products
- Advises CSU administrators on policies related to quantitative social science data for research and instruction, while advancing best practice across campuses
- Represents the collective interests of the CSU campuses to external stakeholders on matters pertaining to social science research and instruction

Supporting CSU Faculty in Research and Instruction

Structure and Governance

The Organization and Services Chart displays the relationship between the Chancellor's Office and the Council. The Council continues to operate under the management of its elected Chair and Executive Committee. Dr. Gerard L. Hanley, Assistant Vice Chancellor of Academic Technology Services, provides administrative support for Council's budget, subscriptions and contracts. Dr. Ganesh Raman, Assistant Vice Chancellor, Office of Research, provides support in an advisory capacity as the Council is an officially recognized CSU Affinity Group.

Figure 1. SSRIC Organization and Services Chart



See Table 3. Faculty Support: Activities and Outcomes (p. 13) for the Council's 2015-2016 baseline indicators related to its support for faculty in research and instruction.

**California State University
Social Science Research and Instructional Council
2015-2016 Annual Report**

SSRIC Campus Representatives

SSRIC membership includes thirty-one (31) faculty, two (2) staff members and three (3) at-large non-voting faculty emeriti. In addition to representing their campuses, their disciplines are varied and include: Chicano and Latino Studies, Economics, Geography, Geography and Anthropology, History, Library Science, Politics and Public Administration, Political Science, Psychology, Social Sciences, Sociology, Technology. The following list (by campus) shows this past year's membership.

Name	Campus	Department
Rhonda Dugan	CSU Bakersfield	Sociology
Kimmy Kee-Rose	CSU Channel Islands	Psychology
Billy Wagner	CSU Channel Islands	Sociology
Stephen Stratton	CSU Channel Islands	Library
Lori Weber	CSU Chico	Political Science
John Menary	CSU Dominguez Hills	Geography
Carl Sneed	CSU Dominguez Hills	Psychology
Carl Stempel	CSU East Bay	Sociology
Patricia Jennings	CSU East Bay	Sociology
Tim Kubal	CSU Fresno	Sociology
Edward Nelson (at-large)	CSU Fresno	Sociology
Matthew Jarvis	CSU Fullerton	Political Science
Aaron Goetz	CSU Fullerton	Psychology
Sarah Fay Philips	Humboldt State University	Library
Josh Meisel	Humboldt State University	Sociology
José Moreno	CSU Long Beach	Chicano and Latino Studies
Stafford Cox	CSU Long Beach	Academic Technology Services
Gilbert Garcia	CSU Los Angeles	Natural and Social Sciences
Jill Yamashita	CSU Monterey Bay	Psychology
Jennifer Dyer-Seymour	CSU Monterey Bay	Psychology
Regan Maas	CSU Northridge	Geography
Gene Turner (at-large)	CSU Northridge	Geography
Mario Guerrero	CSU Polytechnic Pomona	Political Science
Michael Reibel	CSU Polytechnic Pomona	Geography and Anthropology
Sandra Emerson	CSU Polytechnic Pomona	Political Science
John L. Korey (at-large)	CSU Polytechnic Pomona	Political Science
Ellen Berg	CSU Sacramento	Sociology
Aya Ida	CSU Sacramento	Sociology
Thomas Long	CSU San Bernardino	History
Ginger Shoulders	San Diego State University	College of Liberal Arts
Francis Neely	San Francisco State University	Political Science
Marcela Garcia-Castañon	San Francisco State University	Political Science
Matt Holian	San Jose State University	Economics
Gregory Bohr	CPSU San Luis Obispo	Social Sciences
Kristin Bates	CSU San Marcos	Sociology
Garry Rolison	CSU San Marcos	Sociology
Brian Gillespie	Sonoma State University	Sociology
Nancy W Hudspeth	CSU Stanislaus	Politics & Public Admin

**California State University
Social Science Research and Instructional Council
2015-2016 Annual Report**

SSRIC Committees

Council representatives participate in Council governance, promotion of the ICPSR, Field and Roper databases, communication with their respective campus faculty, and the planning of Council services such as training, workshops, development of online course materials, and the student symposium. Most importantly, they serve on the following Council committees.

1. Executive Committee

Stafford Cox (chair, Long Beach), Matt Jarvis (past-chair, Fullerton), Tim Kubal (chair-elect, Fresno), Regan Maas (member, Northridge), Jill Yamashita (member, Monterey Bay), John Korey (at-large, Pomona) and Ed Nelson (at-large, Fresno)

2. Bylaws Committee (Reactivated on May 6, 2016)

Stafford Cox (chair, Long Beach), Rhonda Dugan (Bakersfield), John Korey (at-large, Pomona) and Jill Yamashita (Monterey Bay)

3. CalSpeaks Task Force (Initiated on May 6, 2016)

Matt Jarvis (Fullerton), John Korey (at-large, Pomona), Marcela (San Francisco), Ed Nelson (at-large Fresno) and Aya Ida (Sacramento)

4. Field Faculty Fellowship Committee

2015-2016 Reviewers: Susan Garfin (Sociology, Sonoma, retired), Charles Gossett (Sacramento), Bruce Brown (Pomona) and Ed Nelson (at-large, Fresno, non-voting Chair)

5. ICPSR and Summer Program Liaison

Greg Bohr (Liaison, San Luis Obispo)

6. Social Science Interdisciplinary Program Task Force (Initiated on October 9, 2015)

Regan Maas (Northridge), Brian Gillespie (Sonoma), Marisela (SFSU), Billy Wagner (Chair, Channel Islands) and Francis Neely (SFSU) will serve as contact with Gene Geisler.

7. Social Science Student Symposium Awards/Paper Review Committee

Gilbert Garcia (Chair, Los Angeles), Kristen Bates (San Marcos), Rhonda Dugan (Bakersfield), Brian Gillespie (Sonoma), John Menary (Dominguez Hills), Tim Kubal (Sociology, Fresno)

8. Social Science Student Symposium Host Campus Liaison

Ginger Shoulders (Liaison, San Diego) 41st S⁴ - May 5, 2016. Note: The Council renamed its Student Research Conference to the "Social Science Student Symposium" (S4) in 2014-2015 both to avoid confusion with the similarly named "CSU Student Research Competition" and to specifically indicate a social science event.

9. Web Liaison Committee

Greg Bohr (San Luis Obispo), John Korey (at-large, Pomona), Tim Kubal (Chair, Fresno) and Ginger Shoulders (San Diego)

Supporting Students in Social Sciences

Student Research Conference

In 2016, the 41st Annual Social Science Student Symposium was held at the San Diego State campus (May 5, 2016). The conference is an all-day event starting at 8 a.m. with registration and ending at 3 p.m. with an award ceremony. During the day, the symposium includes concurrent sessions, each of which can accommodate 3-4 student presentations. SSRIC in collaboration with the host campus provides a guest speaker luncheon for all participants.

There were 63 student presentations this year. Eighteen CSU campuses were represented. SSRIC and San Diego State faculty and staff served as session moderators and coordinated the check-in and registration tables. The symposium provides both undergraduate and graduate students with a forum to present their work, to see the work of their peers, and to forge connections with faculty experts from across the system. The symposium rotates between northern and southern campuses each year.

Students can also compete for awards by submitting a research paper and presenting at the symposium. Over the past three years, student symposium participation has increased, in part, due to the generous financial support from Dr. Gene Geisler—professor emeritus of political science at San Francisco State and one of the council’s founders. These funds have provided for the SSRIC student paper awards and student travel since the 39th Annual Student Research Conference at Fullerton (May 8, 2014).

Each year, three students are selected for “Best Paper Awards” by the SSRIC Awards/Paper Review committee. These awards come with \$5,000 prizes. This year \$75 awards were provided to all other paper presentations with an additional \$75 travel allotment to those students who traveled from other CSU campuses. Dr. Geisler’s “SSRIC Faculty Memorial Fund” has been very much appreciated by the students.

The following Best Paper Awards were presented this year to the following students:

- The Charles McCall Award for Best Undergraduate Paper: Maria Pimentel, California State University, Channel Islands, “Is Education the Great Equalizer? Comparing the Wages of Native and Immigrant Latinos and Asians in California: 2000-2012”
- The Betty Nesvold Award for Best Graduate Paper: Dara Siegl, San Diego State University, “Privacy and False Identification Risk in Geomasking Techniques”
- The Gloria Rummels Award for Best Paper Using Quantitative Data: Ginger Hashimoto, California State University, Sacramento, “Analyzing Factors that Predict Alumni Giving at a Public University in California”

See Table 4. Student Success: Activities and Outcomes (p. 14) for the Council’s 2015-2016 baseline indicators related to student success.

Providing Social Science Resources

Databases

The CSU subscribes to the following social science data bases:

- Inter-university Consortium for Political and Social Research (ICPSR) at the University of Michigan. Founded in 1962, the Consortium consists of about 760 member institutions, including, since 1972, the CSU. It houses over 500,000 datasets from over 9,675 studies. 69,800 citations of published and unpublished works are linked to its databases.
- Roper Center for Public Opinion Research at Cornell University. Founded in 1947, the Center houses the world's largest archive of survey data. The archive holds over 12,000 U.S. and 8,000 international datasets. iPOLL offers over 600,000 questions and answers from U.S. national adult sample polls.
- Field Research Corporation in San Francisco. An independent, nonpartisan public opinion news service, it has operated since 1947, and has issued over 2,500 reports based on its polls of California residents.

The consolidation of membership in these organizations, facilitated by the Council, represents a considerable savings (over \$132,000 or 30%) to faculty and campuses that would otherwise have to subscribe individually. Students, faculty and staff are able to download data, codebooks, and other material directly to their computers as a result of this access.

Instructional Materials and Workshops

The Council makes available instructional material via its website at www.ssrlic.org. These include two online textbooks, instructional modules and exercises, and instructional handouts. Continuing this year, the Web Liaison Committee has been working with Andrew Roderick (SFSU Academic Technology) to update the website (from Drupal 6 to 8), particularly by exploring new ways of delivering workshop content online.

The Council continues to offer free workshops at any campus where faculty have expressed an interest in learning how to access and analyze quantitative data from ICPSR, Roper, and Field, and using SDA. Workshops are also provided on the use of SPSS and SDA (Survey Documentation and Analysis) for data analysis.

The Social Science Interdisciplinary Program Task Force was formed at the Council's Fall 2015 meeting. Its task was to consider a "Social Scientist Major" and to investigate which among the 22 campuses has an inter-disciplinary program. CSU Northridge was identified as having a Social Science Interdisciplinary Online Completion Degree program. This program includes two newly created courses: research methods (mostly quantitative) and writing in the social sciences. The task force suggested further exploring CSUN's program and using it as a model that Council can consider promoting system-wide. The task force will continue to explore an online "Social Scientist Major" with a set of core courses supplementing on-campus courses.

**California State University
Social Science Research and Instructional Council
2015-2016 Annual Report**

Faculty Research

The Council provided limited support for faculty and graduate students to attend the ICPSR Summer Program through 2014. Since then the Council promotes the ICPSR Summer Program by distributing the program materials via the Council representatives. ICPSR continues to offer a substantial discount on registration fees (half the fee rate) for current students, faculty, staff, and researchers at ICPSR member institutions.) Greg Bohr (San Luis Obispo) serves as liaison with this program.

ICPSR reported that seven (7) faculty and four (4) students enrolled in the 2016 Summer Program. These attendees identified Chico, Dominguez Hills, Fresno, Long Beach, Los Angeles, San Bernardino, San Diego and San Francisco as their home campuses (N=8).

Each year the Field Poll provides the Council with the opportunity to award CSU faculty with a fellowship that includes credit for a limited number of items to be included on an upcoming Field poll. Applicants submit proposals and, on the recommendation of the Council's Field Faculty Fellowship Committee, the Council selects one nominee, pending final approval by the Field Research Corporation. For the coming academic year, the fellowship was awarded to Dr. Stacy L. Mallicoat (Fullerton) for work on public opinion about the death penalty.

Forums for Sharing Information

The Council met three times in the 2015-2016 academic year. The Fall and Spring meetings were hosted at San Francisco State (October 9, 2015) and San Diego State (May 6, 2016), respectively. Both were hybrid in that campus representatives could either attend in-person or on-line. The Fall meeting attendance included 10 in-person and 11 on-line, while the Spring meeting attendance included 12 in-person and 5 on-line. The Winter meeting (February 5, 2016) was conducted online only using Big Blue Button and there were 16 campus representatives in attendance. While the meeting participation included two non-voting at-large members, quorum was attained at each of these SSRIC meetings.

See Table 5. Faculty Support and Student Success: Activities and Outcomes (p. 15) for the Council's 2015-2016 baseline indicators related to the provision of social science resources.

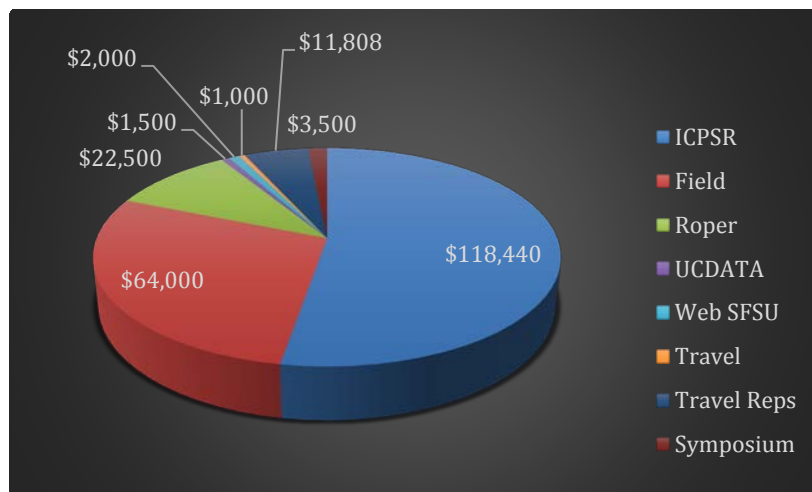
**California State University
Social Science Research and Instructional Council
2015-2016 Annual Report**

Financials

Budget Overview

The 2015-2016 Council budget totaled \$224,748. These funds were distributed as shown below in Figure 1: SSRIC 2015-2016 Distribution. Ninety-one percent (91.2%) of funds paid for ICPSR (52.7%), Field (28.5%) and Roper (10.0%). About 5.7% of funds are earmarked for travel with 1.6% for the Symposium. UC DATA (University of California Data Archive and Technical Assistance) and the SFSU Website support represent less than two (2) percent combined. Note that the Council is supported solely by twenty-two (22) campuses.

Figure 2. SSRIC 2015-2016 Budget Distribution¹.



¹ The Council budget for 2015-2016 is \$224,748.

Subscription Fees

Subscriptions are administered within the Chancellor's Office by the Department of Academic Technology Services. All services are included for a single flat rate that is assessed based on campus size. The campus subscriptions cover the database licensing fees as well as other services described below.

- archiving and retrieval of Field, Roper, and other data (there are some additional charges for archiving and retrieving these data related to the UC DATA access to the Field Polls)
- administrative services provided by the Chancellor's Office (in-kind contribution)
- training workshops to be held on various campuses and training materials on our website to provide instruction in using the data sets
- technical support provided by members of the SSRIC for accessing and retrieving data (subject to availability), and
- support for an annual student research conference (the amount of financial support dependent on both SSRIC budget and host campus)

**California State University
Social Science Research and Instructional Council
2015-2016 Annual Report**

The SSRIC Budget for 2015-2016 is shown below.

Table 1. SSRIC 2015-2016 Budget: Expenditures

Social Science Research and Instructional Council Line Item Budget	
Database Subscriptions	
Inter-University Consortium for Political and Social Research (ICPSR)	\$118,440
California Field Polls/Faculty Fellowship ¹	\$64,000
Roper Center for Public Opinion Research	\$22,500
Subtotal	\$204,940
Web & Access Services	
UCDATA ²	\$1,500
San Francisco State University	\$2,000
Subtotal	\$3,500
Travel	
Travel – Chair	\$1,000
Travel – Campus Representatives (meetings, workshops, and fees)	\$11,808
Subtotal	\$12,808
Student Symposium	
Conference & Meeting Expenses	\$3,500
Total	\$224,748

¹ SSRIC oversees the selection process for the annual Field Faculty Fellowship. One faculty research proposal is allowed to submit 12 questionnaire items to the Field Institute for inclusion into a future California Field Poll. It is competitive and is open to all CSU faculty members. The value of this fellowship is estimated to be worth \$24,000 or \$2,000 per question.

² UCDATA (University of California Data Archive and Technical Assistance)

**California State University
Social Science Research and Instructional Council
2015-2016 Annual Report**

Twenty-two campuses shared the cost of the Database Subscription fees for 2015-2016. Campus fees have increased by 5% annually since 2010-2011. This was the second year in which the 22 CSU campuses have fully funded SSRIC activities and subscriptions.

Table 2. CSU Campus Subscription Fees 2010-2016

Campus	2010-11	2011-12	2012-13	2013-14	2014-15	2015-2016
Bakersfield	\$6,463	\$6,786	\$7,125	\$7,481	\$7,855	\$8,248
Channel Islands	\$3,573	\$3,752	\$3,940	\$4,137	\$4,343	\$4,561
Chico	\$8,615	\$9,046	\$9,498	\$9,973	\$10,471	\$10,995
Dominguez Hills	\$6,463	\$6,786	\$7,125	\$7,481	\$7,855	\$8,248
East Bay	\$6,463	\$6,786	\$7,125	\$7,481	\$7,855	\$8,248
Fresno	\$8,615	\$9,046	\$9,498	\$9,973	\$10,471	\$10,995
Fullerton	\$11,008	\$11,559	\$12,137	\$12,744	\$13,381	\$14,050
Humboldt	\$6,463	\$6,786	\$7,125	\$7,481	\$7,855	\$8,248
Long Beach	\$11,008	\$11,559	\$12,137	\$12,744	\$13,381	\$14,050
Los Angeles	\$8,615	\$9,046	\$9,498	\$9,973	\$10,471	\$10,995
Monterey Bay	\$3,573	\$3,752	\$3,940	\$4,137	\$4,343	\$4,561
Northridge	\$11,008	\$11,559	\$12,137	\$12,744	\$13,381	\$14,050
Pomona	\$8,615	\$9,046	\$9,498	\$9,973	\$10,471	\$10,995
Sacramento	\$11,008	\$11,559	\$12,137	\$12,744	\$13,381	\$14,050
San Bernardino	\$6,463	\$6,786	\$7,125	\$7,481	\$7,855	\$8,248
San Diego	\$11,008	\$11,559	\$12,137	\$12,744	\$13,381	\$14,050
San Francisco	\$11,008	\$11,559	\$12,137	\$12,744	\$13,381	\$14,050
San Jose	\$11,008	\$11,559	\$12,137	\$12,744	\$13,381	\$14,050
San Luis Obispo	\$8,615	\$9,046	\$9,498	\$9,973	\$10,471	\$10,995
San Marcos	\$3,573	\$3,752	\$3,940	\$4,137	\$4,343	\$4,561
Sonoma	\$6,463	\$6,786	\$7,125	\$7,481	\$7,855	\$8,248
Stanislaus	\$6,463	\$6,786	\$7,125	\$7,481	\$7,855	\$8,248
TOTAL	\$176,092	\$184,901	\$194,146	\$203,853	\$214,046	\$224,748

*The Maritime Academy does not participate due, in part, to an extremely limited social science curriculum

Baseline Indicators of Activities and Outcomes

Table 3. Faculty Support: Activities and Outcomes

SSRIC supports CSU faculty in their professional research and instructional programs.		2015-2016
ACTIVITY: SSRIC organizes an annual membership of representatives drawn from its twenty-two (22) CSU campuses.		
1.	Coordinates the selection of at least one (1) representative per participating campus (N=22) on SSRIC.	33
2.	Manages the access for the twenty-two CSU campuses subscribing to three (3) databases including ICPSR, California Field Polls and Roper Public Opinion.	22
3.	Updates its social science email distribution list used for communications with the twenty-two CSU campuses.	1,090
4.	Provides an analysis of database usage, including the number and volume of downloads, the number of online access visits, the number of faculty and student ICPSR accounts, and self-reported classroom uses of databases for instruction.	
	Number of ICPSR Dataset Downloads	10, 587
	Volume of ICPSR Dataset Downloads (Gigabytes)	892.4
	ICPSR Dataset Accesses using SDA ¹ (Survey Documentation and Analysis)	1,457
	Number of Roper Center Dataset Downloads	744
	Number of Roper Center iPOLL ² Accesses	344
	Number of California Field Poll Downloads using UCDATA ³	1,100
	ICPSR User Accounts ⁴ – Faculty (204), Undergraduates (577), Graduates (312)	1,093
	Self-Reported Classroom Uses of Databases for Instruction	Est. 22
5.	Distributes an Annual Activity and Usage Report to the SSRIC Representatives and the Assistant Vice Chancellor for Research Initiatives and Partnerships; and share this report with the twenty-two (22) campus presidents within 90 days of the end of each fiscal year.	Yes

¹ SDA is an online program developed at University of California, Berkeley that allows individuals to access studies that have been set up for this program.

² iPOLL is a database of survey questions which can be used for trend analysis and to select datasets for downloading.

³ UCDATA at the University of California, Berkeley provides access to Field Poll datasets.

⁴ ICPSR User Accounts are those users who have logged into their accounts and have downloaded datasets during the past fiscal year.

**California State University
Social Science Research and Instructional Council
2015-2016 Annual Report**

Table 4. Student Success: Activities and Outcomes

SSRIC supports CSU students in their social science studies.		2015-2016
ACTIVITY: SSRIC supports opportunities for enhancing student success through its website and the Social Science Student Symposium (S ⁴).		S ⁴ 41st
1.	Disseminates promotional messages to increase the number of visits to the SSRIC Website pages including the S ⁴ online registration.	5
2.	Solicits undergraduate and graduate student participation in the S ⁴ Registrations: Undergraduate (54), Graduate (40), Doctoral (2), Other (2) At the Social Science Student Symposium: Presentations Co-authors, Non-presenters Campuses Represented at the Symposium	98 63 7 18
3.	Increase student usage of the databases among those who are S ⁴ presenters. When asked, "Did you collect and present original research data or did you conduct secondary analysis?", students answered: 51.9% original, 38.5% secondary, and 9.6% did not use any data (Post S ⁴ Evaluation Survey N=52) Of those conducting secondary analysis, 15% used ICPSR data, 5% used Roper data and 0% used Field Poll data for a total of 20%.	38.5% 20.0%
4.	Promotes student involvement in mentored research among those who are S ⁴ presenters. 72 Students identified their Faculty Mentors 10 of the 72 Faculty Mentors supported multiple students More than 50 unique courses were identified by the students	72 10 +50
5.	Promotes S ⁴ student presenters to publish their research findings. When asked, "Do you intend to submit your research paper for publication within the next year", students answered: 53.9% "Yes", 26.9% "Uncertain", and 19.2% "No". (Post S ⁴ Evaluation Survey N=52)	53.9%
6.	Increases number of faculty who participate/attend the S ⁴ . Attending, Serving as Session Moderators Awards/Paper Review Committee 6 SSRIC Representatives	10 6

**California State University
Social Science Research and Instructional Council
2015-2016 Annual Report**

Table 5. Faculty Support and Student Success: Activities and Outcomes

SSRIC provides students and faculty access to social science resources.		2015-2016
ACTIVITY: SSRIC promotes the Social Science resources through its website, workshops, newsletters and direct email announcements and Social Science Student Symposium (S ⁴).		
1.	Update and advance the usage of the SSRIC Website. Pageviews Unique Pageviews Average Time on Page	57,360 40,328 1:42
2.	Update and further the online availability of teaching resources. SSRIC Website: www.ssrlic.org YouTube Videos: ICPSR (1) with 6 viewers Roper 2016 (1) with 2 viewers Field Poll (1) with 10 viewers	Modules 5 Exercises 12 Online Textbooks 2 Instructional Data Subsets 6 Links to Other Instructional Sites 97 6 2 10
3.	Provide at least three (3) training opportunities such as face-to-face, webinars, workshops and online programs. SSRIC Website Teaching Resources www.ssrlic.org Pageviews Unique Pageviews Average Time on Page CSU Workshops for Faculty/Students CSU Demonstrations Faculty/Students CSU Workshop/Demonstration Participants	34,338 25,972 1:53 1 8 205
4.	Publish the semi-annual SSRIC e-newsletter to SSRIC representatives, who forward the e-newsletter into their campus community.	2
5.	Publicize SSRIC services/activities and new survey/database offerings via email announcements (6 to 12 per year) to SSRIC representatives, who forward the messages into their campus community. ICPSR Announcements Field Poll Data SSRIC Social Science Student Symposium Flyer	12 12 1