
THE SOCIAL SCIENCE RESEARCH AND INSTRUCTIONAL COUNCIL

2018-2019 Annual Report*
July 1, 2018 to June 30, 2019

Dr. Regan Maas, SSRIC Chair
Department of Geography
and Environmental Studies
CSU, Northridge
regan.maas@csun.edu

Dr. Chris Den Hartog, SSRIC Chair-Elect
Department of POLicial Science
CSU, San Luis Obispo
cdenhart@calpoly.edu

**including Annual Data Usage and Service Report*

Contents

Introduction.....	3
Vision.....	4
Mission.....	4
Supporting CSU Faculty in Research and Instruction.....	5
Structure and Governance.....	5
Figure 1. SSRIC Organization and Services Chart.....	5
SSRIC Campus Representatives.....	6
SSRIC Committees.....	7
Social Science Student Symposium (S ⁴).....	8
Providing Social Science Resources.....	9
Databases.....	9
Instructional Materials and Workshops.....	10
Faculty Research.....	10
Forums for Sharing Information.....	11
Financials.....	11
Budget Overview.....	11
Subscription Fees.....	11
Table 1. SSRIC 2016-2017 Budget: Expenditures.....	12
Table 2. CSU Campus Subscription Fees 2010-2016.....	13
Baseline Indicators of Activities and Outcomes.....	14
Table 3. Faculty Support: Activities and Outcomes.....	14
Table 4. Student Success: Activities and Outcomes.....	15
Table 5. Faculty Support and Student Success: Activities and Outcomes.....	16
Appendix: SSRIC Annual Data Usage and Service Report.....	18

Introduction

The SSRIC (Council) is organized around scholarly, creative, research and educational activities that combine the interests and expertise of individual faculty, staff and students across the California State University System. The Council is dedicated to assisting students and faculty in their use of social science data for undergraduate and graduate classroom training and research.

In 2018-2019, twenty campuses jointly participate and share in the cost of database subscriptions, services and governance. The California State University campuses include: Bakersfield, Channel Islands, Dominguez Hills, East Bay, Fresno, Fullerton, Humboldt, Long Beach, Los Angeles, Monterey Bay, Northridge, Sacramento, San Bernardino, San Diego, San Francisco, San Jose, San Luis Obispo, San Marcos, Sonoma, and Stanislaus.

On November 6, 2015, the Council submitted its request to be officially recognized as a permanently structured, systemwide multi-campus affinity group (per CSU Executive Order 1103). The Council's proposal received the support of 22 campus Presidents with President Jane Close Conoley, California State University, Long Beach, serving as the Council's lead President. On December 18, 2015, the Office of the Chancellor granted conditional authorization for the SSRIC to continue its current operations and to prepare a five-year strategic plan by April 1, 2016. Subsequently, the Council was formally authorized as a sanctioned entity representing CSU interests and resources in the social sciences on May 26, 2016. The authorization is through March 31, 2021 and can be renewed for an additional five (5) year period with the submission of an updated strategic plan on or before November 1, 2020.

Submitted by:

Dr. Regan Maas
Department of Geography and Environmental Studies
CSU, Northridge
regan.maas@csun.edu

Dr. Chris Den Hartog
Department of Political Science
CSU, San Luis Obispo
cdenhart@calpoly.edu

Vision

SSRIC seeks to enable faculty and students to advance their knowledge and skills in social science by providing access to major database archival resources, by supporting state-of-the art research and instructional tools necessary to excel and maintain the best learning and teaching environments, and by enhancing faculty and student opportunities in their intellectual exploration of the social sciences.

Mission

Founded in 1972, the Social Science Research and Instructional Council (SSRIC) is the oldest of the disciplinary councils in the California State University system. In 2016 the SSRIC also became a CSU Affinity group, one of nine multi-campus centers engaged in research collaboration. (www2.calstate.edu/impact-of-the-csu/research/Pages/campus-research-collaborations.aspx) Members of Council promote the study of social sciences through many of the activities listed below.

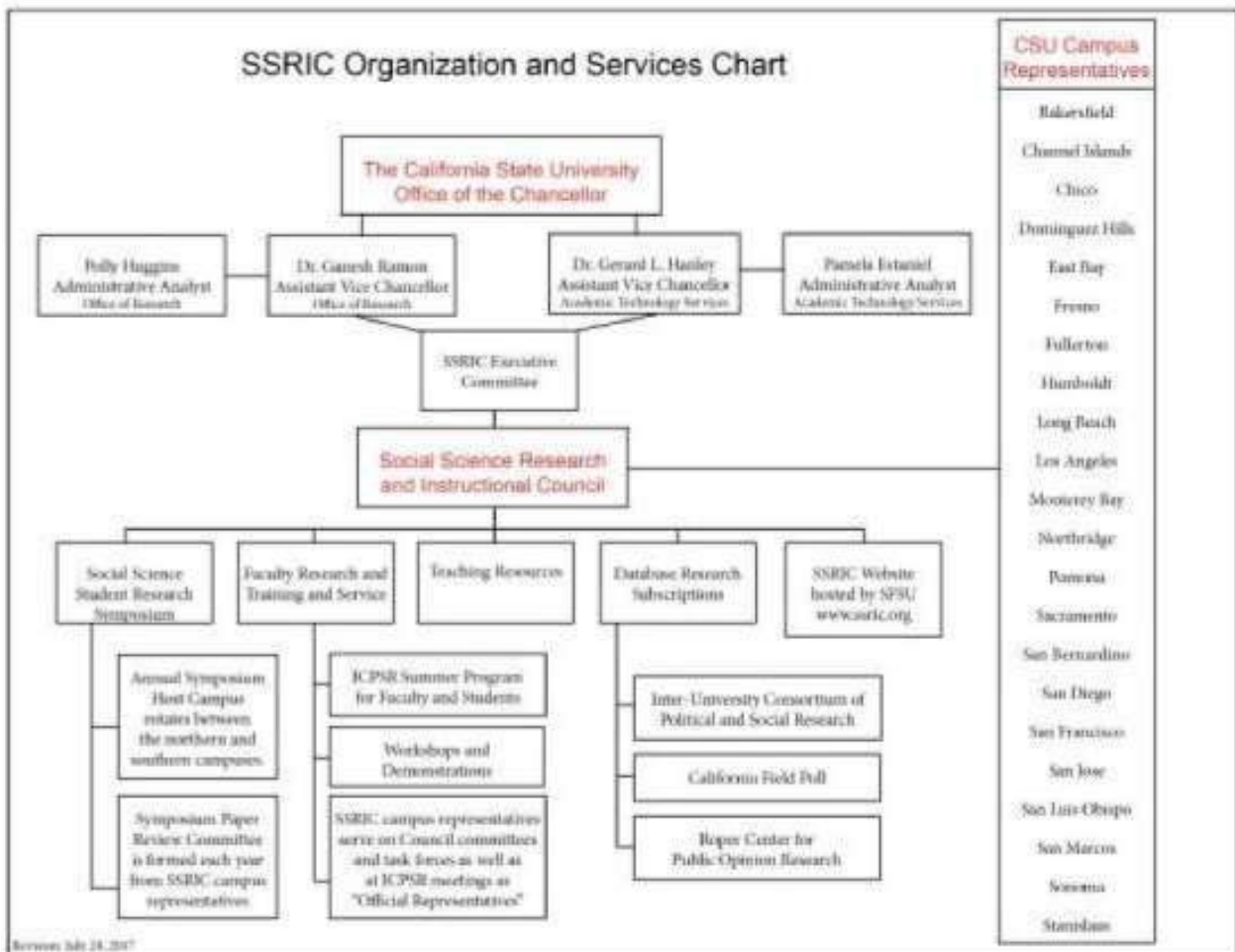
- Facilitates access to social science database subscriptions and online resources, including instructionally-related and research-related materials (www.ssrlic.org)
- Works with the Chancellor's Office and data providers to obtain these high-quality resources at a reasonable cost to the campuses
- Provides opportunities for training and professional development of faculty, staff, and students through teaching, research, scholarly, and creative activities
- Promotes quantitative social science research by students via its annual SSRIC Social Science Student Symposium (S⁴)
- Enhances student learning by raising the academic experience of students through its online resources and database subscriptions
- Provides assistance to campuses in developing, initiating and conducting training programs
- Identifies and promulgates successful computerized social science projects in the CSU curriculum
- Supports a forum for sharing information about social science data and computer products
- Advises CSU administrators on policies related to quantitative social science data for research and instruction, while advancing best practice across campuses
- Represents the collective interests of the CSU campuses to external stakeholders on matters pertaining to social science research and instruction

Supporting CSU Faculty in Research and Instruction

Structure and Governance

The Organization and Services Chart displays the relationship between the Chancellor's Office and the Council. The Council continues to operate under the management of its elected Chair and Executive Committee. The Assistant Vice Chancellor of Academic Technology Services provides administrative support for the Council's budget, subscriptions and contracts. Dr. Ganesh Raman, Assistant Vice Chancellor, Office of Research, provides support in an advisory capacity as the Council is an officially recognized CSU Affinity Group.

Figure 1. SSRIC Organization and Services Chart



See Table 3. at the end of this report for more information on SSRIC support for faculty in research and instruction.

SSRIC Campus Representatives

2018-2019 SSRIC membership included twenty-seven faculty, one staff member, and three at-large non-voting faculty emeriti. In addition to representing their campuses, their disciplines are varied and include: Chicano and Latino Studies, Economics, Geography, Politics and Public Administration, Political Science, Psychology, Social Sciences, Sociology, and Academic Technology Services. The following list (by campus) shows this past year's membership.

Name	Campus	Department
Rhonda Dugan	CSU Bakersfield	Sociology
Kimmy Kee-Rose	CSU Channel Islands	Psychology
Billy Wagner	CSU Channel Islands	Sociology
John Menary	CSU Dominguez Hills	Geography
Carl Sneed	CSU Dominguez Hills	Psychology
Carl Stempel	CSU East Bay	Sociology
Patricia Jennings	CSU East Bay	Sociology
Tim Kubal	CSU Fresno	Sociology
Edward Nelson (at-large)	CSU Fresno	Sociology
Matthew Jarvis	CSU Fullerton	Political Science
Aaron Goetz	CSU Fullerton	Psychology
Josh Meisel	Humboldt	Sociology
José Moreno	CSU Long Beach	Chicano and Latino Studies
Stafford Cox	CSU Long Beach	Academic Technology
Gilbert Garcia	CSU Los Angeles	Natural and Social Sciences
Jill Yamashita	CSU Monterey Bay	Psychology
Jennifer Dyer-Seymour	CSU Monterey Bay	Psychology
Regan Maas	CSU Northridge	Geography
Gene Turner (at-large)	CSU Northridge	Geography
John L. Korey (at-large)	CSU Pomona	Political Science
Patricia Morris	CSU Sacramento	Sociology
Jacqueline Brooks	CSU Sacramento	Sociology
Eric Vogelsang	CSU San Bernardino	Sociology
Enrico Marcelli	San Diego State	Sociology
Audrey Beck	San Diego State	Sociology
Francis Neely	San Francisco State	Political Science
Marcela Garcia-Castañon	San Francisco State Matt	Political Science
Holian	San Jose State University	Economics
Chris Den Hertog	CSU San Luis Obispo	Political Science
Bob Roberts	CSU San Marcos	Sociology
Nancy W Hudspeth	CSU Stanislaus	Politics & Public Admin

SSRIC Committees

Council representatives participate in Council governance, promotion of the ICPSR, Field and Roper databases, communication with their respective campus faculty, and the planning of Council services such as training, workshops, development of online course materials, and the student symposium. Most importantly, they serve on the following Council committees.

1. Executive Committee

Regan Maas (chair, Northridge), Tim Kubal (past-chair, Fresno), Chris Den Hartog (chair-elect, San Luis Obispo), Stafford Cox (Long Beach), Eric Vogelsang (San Bernardino)

2. Bylaws Committee (Reactivated on May 6, 2016)

Stafford Cox (chair, Long Beach), Chris Den Hartog (San Luis Obispo), Rhonda Dugan (Bakersfield), John Korey (at-large, Pomona) and Jill Yamashita (Monterey Bay)

3. CalSpeaks Task Force (Initiated on May 6, 2016)

Matt Jarvis (chair, Fullerton), Nancy Hudspeth (Stainslaus), Regan Maas (Northridge), Aya Ida (Sacramento), Marcela Garcia-Castañon (San Francisco), Ed Nelson (at-large, Fresno)

4. Database Usage Taskforce

Ed Nelson (Chair, Fresno), Matt Holian (San Jose), John Menary (Dominguez Hills), Ken Shultz (San Bernardino)

5. ICPSR Summer Program Liaison Committee

Chris Den Hartog (San Luis Obispo), Stafford Cox (Long Beach), Eugene Turner (Northridge)

6. Newsletter Editor

Ed Nelson (Fresno)

7. Social Science Student Symposium Awards/Paper Review Committee

Gilbert Garcia (Chair, Los Angeles), Rhonda Dugan (Bakersfield), John Menary (Dominguez Hills), Matt Holian (San Jose)

8. Social Science Student Symposium Host Campus Liaison

Francis Neely (Chair, San Francisco), Marcela Garcia-Castañon (San Francisco)

9. Web Liaison Committee

Tim Kubal (Chair, Fresno)

Web Updates Subcommittee

Marcela Garcia-Castañon (San Francisco), John Korey (at large, Pomona), Stafford Cox (Long Beach)

Outreach Subcommittee

Marcela Garcia-Castañon (San Francisco), Aya Ida (Sacramento)

10. Workshops

Ed Nelson (Fresno)

Social Science Student Symposium (S⁴)

In 2019, the 44th Annual Social Science Student Symposium was held at San Francisco State (May 2, 2019). The symposium is an all-day event starting at 8 a.m. with registration and ending at 3 p.m. with an award ceremony. During the day, the symposium includes concurrent sessions, each of which can accommodate 3-4 student presentations. SSRIC in collaboration with the host campus provides a guest speaker luncheon reception for all participants.

Undergraduate and graduate students have the opportunity to present their work in a non-threatening environment. For many students, this is their first opportunity to present their work at a professional conference. The symposium provides both undergraduate and graduate students with a forum to present their work, to see the work of their peers, and to forge connections with faculty experts from across the system. The symposium rotates between northern and southern campuses each year.

We published 68 paper titles in the program, an increase from the 58 papers at the symposium in 2018. We had 14 panels and 14 faculty members serving as panel moderators. SSRIC and SFSU faculty and staff served as session moderators and coordinated the check-in and registration tables. The symposium included students from 14 CSU campuses, 54.4% of whom were not from the host campus.

Based on statistics from an online survey of symposium participants, we know that 68.9% were undergraduates and 31.1% were graduate students. 56.8% say they are likely or very likely to submit their research for publication in the next year. 43% used original data in their research, while 54% used secondary data.

Students can also compete for awards by submitting a research paper and presenting at the symposium. Over the past four years, student symposium participation has increased, in part, due to the generous financial support from Dr. Gene Geisler—professor emeritus of political science at San Francisco State and one of the council's founders. This has been the source of much of the funding for the SSRIC student paper awards and student travel since the 39th Annual Student Research Conference at Fullerton (May 8, 2014).

Each year, three students are selected for "Best Paper Awards" by the SSRIC Awards/Paper Review committee. These awards come with \$500 prizes. This year a \$100 travel allotment was also provided to all paper presenters who traveled from other CSU campuses, and a \$50 allotment to students from the host campus. Dr. Geisler's "SSRIC Faculty Memorial Fund" has been very much appreciated by the students.

The following Best Paper Awards were presented this year to the following students:

- Best use of Quantitative Methodology: **Abigail Richards**, Political Science, San Francisco, "The Discretionary Docket: Congressional Influence on the Supreme Court's Agenda."
- Best Undergraduate Paper: **Raini Vargas**, Political Science, San Francisco, "The Contact Effect on Lesbian, Gay, and Transgender Policy: Public Attitudes Towards LGBTQ(+)
Inclusive Legislation."
- Best Graduate Paper: **Edward Berdan**, Political Science & Criminal Justice, Chico, "Challenging the Monolithic Paradigm: Education, Partisan Affiliation, and the Asian-American Community."

See Table 4. at the end of this report for more information on student success.

Providing Social Science Resources

Databases

Through the SSRIC, the CSU has subscribed to the following social science data bases:

- Inter-university Consortium for Political and Social Research (ICPSR) at the University of Michigan. Founded in 1962, the Consortium consists of about 760 member institutions, including, since 1972, the CSU. It houses over 500,000 datasets from over 9,675 studies. 69,800 citations of published and unpublished works are linked to its databases.
- Roper Center for Public Opinion Research at Cornell University. Founded in 1947, the Center houses the world's largest archive of survey data. The archive holds over 12,000 U.S. and 8,000 international datasets. iPOLL offers over 700,000 questions and answers from U.S. national adult sample polls. Because of many years of low usage, the SSRIC council voted to discontinue the Roper subscription starting in the 2018-2019 fiscal year.
- Field Research Corporation in San Francisco. An independent, nonpartisan public opinion news service, it has operated since 1947, and has issued over 2,500 reports based on its polls of California residents. On January 1, 2017 the Field Research Corporation was closed by its parent company.
- The SSRIC signed an agreement to work with the Institute of Social Research (ISR) at CSU-Sacramento for the CALSPEAKS program beginning Fall 2018. CALSPEAKS uses random probability sampling techniques to survey a representative sample of Californians at approximately two-month intervals. The program carries out five to twelve surveys per year. Because of our partnership, CALSPEAKS will provide an extensive archive of survey data to the CSU, along with the opportunity for several joint faculty/student projects. Three to four projects per year that place questions on one of the polls are submitted in a competition to the SSRIC. The faculty member sponsoring the project participates with ISR staff in the development of the survey questionnaire and takes lead responsibility in the analysis and preparation of a report, which may be issued under the Institute's name. All field work is provided by ISR. Resulting data are used by the team for research and available to all faculty, staff, and students in the CSU. Thus far, CalSpeaks has placed SSRIC awardees' questions on its surveys as planned. However, CalSpeaks has thus far been

unable to solve all of the logistical obstacles to making its data archive available to CSU users for the past two years, as it was supposed to do under the CalSpeaks-SSRIC contract. Thus, the SSRIC decided in Spring 2019 to withhold from its 2019-2020 payment to CalSpeaks the \$20,000 meant to pay for archive access. SSRIC will send CalSpeaks \$18,000 during the 2019-2020 year to pay for CSU faculty awardees' questions to be placed on CalSpeaks surveys.

The consolidation of membership in these organizations, facilitated by the Council, represents a considerable savings to campuses that would otherwise have to subscribe individually. Students, faculty and staff are able to download data, codebooks, and other material directly to their computers as a result of this access.

Instructional Materials and Workshops

The Council makes available instructional material via its website at www.ssrlic.org. These include two online textbooks, instructional modules and exercises, and instructional handouts.

Since 2017-2018 the SSRIC has embarked on an effort to expand the number of instructional materials on its website by offering a competition among CSU faculty. In 2018-2019, we awarded five faculty members for their excellent instructional materials that for the SSRIC website. The 2018-2019 awardees were:

Awardee	Award Department	Campus
Scott Siegel	International Relations	San Francisco
Leilani Madrigal	Sport Psychology	Long Beach
Miranda McIntyre	Psychology	Long Beach
Nancy Hudspeth	Political Science	Stanislaus
Nancy Arrington	Political Science	San Luis Obispo

The Council continues to offer free workshops at any campus where faculty have expressed an interest in learning how to access and analyze quantitative data and in using SPSS or SDA software.

Faculty Research

The Council promotes the ICPSR Summer Program workshops by distributing the program materials to CSU campuses via the Council representatives. Workshops in this long-time program, run by the University of Michigan, teach advanced methods of quantitative analysis used in social science research; the workshops run from a few days to a four weeks in length.

Since 2017-2018, SSRIC has also award stipends, based on a competitive application process, to cover ICPSR Summer Program workshop registration fees for full-time CSU faculty. In 2017-2018, eight CSU faculty members received these stipends. In 2018-2019 nine faculty received these stipends. Across the two years we have run this program, awards have gone to faculty members from 10 campuses, from departments of Advanced Studies in Education and Counseling, Chicano and Latin American Politics, Criminal Justice, Economics, Geography, Human Development, Nutrition and Dietetics, Political Science, Psychology, Public Administration, Public Health, and Sociology.

Forums for Sharing Information

The Council met three times in the 2018-2019 academic year. Two of the meetings were conducted in-person and online, while the third meeting was conducted solely online via Zoom software. A quorum was attained at each of these SSRIC meetings.

See Table 5 at the end of this report for more information about sharing of social science resources.

Financials

Budget Overview

The 2018-2019 council budget totaled \$217,691, distributed as follows among spending items: ICPSR database subscription (50.8%), CALSPEAKS (19.5%), ICPSR Summer Program stipends (7.3%), instructional materials awards (8.3%), the Student Symposium (6.9%), travel (6.3)%, marketing (0.7%), and SFSU Website support (0.9%). SSRIC revenues came solely from subscription fees paid by twenty campuses.

Subscription Fees

The Chancellor's Office Department of Academic Technology Services procures database subscriptions. All services are included for a single flat rate that is assessed based on campus size. The campus subscriptions cover the database licensing fees as well as other services described below.

- Administrative services provided by the Chancellor's Office (in-kind contribution)
- Training workshops to be held on various campuses and training materials on our website to provide instruction in using the data sets
- Technical support provided by members of the SSRIC for accessing and retrieving data (subject to availability), and
- Support for an annual student research symposium (the amount of financial support dependent on both SSRIC budget and host campus)

Table 1. SSRIC 2018-2019 Budget: Expenditures	
<i>Social Science Research and Instructional Council Line Item Budget</i>	
Database Subscriptions	
Inter-University Consortium for Political and Social Research (ICPSR)	\$110,720
CALSPEAKS	\$42,500
Subtotal	\$153,220
Web Access Services	
San Francisco State University	\$2,000
Subtotal	\$2,000
Travel for Meetings/Symposium	
Chair Travel	\$1,500
Campus Rep Travel	\$10,471
Subtotal	\$11,971
Student Symposium	
Conference and Meeting Expenses	\$15,000
Subtotal	\$15,000
Program Initiatives	
Instructional Materials Program awards	\$18,000
ICPSR Summer Program stipends	\$16,000
Marketing	\$1,500
Subtotal	\$35,500
Total	\$217,691

Table 2. Campus subscription fees by academic year, 2011-2019

Campus Subscriptions	2011-12	2012-13	2013-14	2014-15	2015-16	2016-17	2017-18	2018-19
Bakersfield	\$6,786	\$7,125	\$7,482	\$7,856	\$8,248	\$8,661	\$8,661	\$7,500
Channel Islands	\$3,752	\$3,940	\$4,137	\$4,343	\$4,561	\$4,789	\$4,789	\$4,147
Chico	\$9,046	\$9,498	\$9,973	\$10,472	\$10,995	\$11,545	\$11,545	\$0
Dominguez Hills	\$6,786	\$7,125	\$7,482	\$7,856	\$8,248	\$8,661	\$8,661	\$7,500
East Bay	\$6,786	\$7,125	\$7,482	\$7,856	\$8,248	\$8,661	\$8,661	\$7,500
Fresno	\$9,046	\$9,498	\$9,973	\$10,472	\$10,995	\$11,545	\$11,545	\$9,998
Fullerton	\$11,559	\$12,137	\$12,744	\$13,381	\$14,050	\$14,753	\$14,753	\$12,775
Humboldt	\$6,786	\$7,125	\$7,482	\$7,856	\$8,248	\$8,661	\$8,661	\$7,500
Long Beach	\$11,559	\$12,137	\$12,744	\$13,381	\$14,050	\$14,753	\$14,753	\$12,775
Los Angeles	\$9,046	\$9,498	\$9,973	\$10,472	\$10,995	\$11,545	\$11,545	\$9,998
Maritime Academy	\$3,752	\$3,940	\$4,137	\$4,343	\$4,561	\$4,789	\$0	\$0
Monterey Bay	\$3,752	\$3,940	\$4,137	\$4,343	\$4,561	\$4,789	\$4,789	\$4,147
Northridge	\$11,559	\$12,137	\$12,744	\$13,381	\$14,050	\$14,753	\$14,753	\$12,775
Pomona	\$9,046	\$9,498	\$9,973	\$10,472	\$10,995	\$11,545	\$0	\$0
Sacramento	\$11,559	\$12,137	\$12,744	\$13,381	\$14,050	\$14,753	\$14,753	\$12,775
San Bernardino	\$6,786	\$7,125	\$7,482	\$7,856	\$8,248	\$8,661	\$8,661	\$7,500
San Diego	\$11,559	\$12,137	\$12,744	\$13,381	\$14,050	\$14,753	\$14,753	\$12,775
San Francisco	\$11,559	\$12,137	\$12,744	\$13,381	\$14,050	\$14,753	\$14,753	\$12,775
San Jose	\$11,559	\$12,137	\$12,744	\$13,381	\$14,050	\$14,753	\$14,753	\$12,775
San Luis Obispo	\$9,046	\$9,498	\$9,973	\$10,472	\$10,995	\$11,545	\$11,545	\$9,998
San Marcos	\$3,752	\$3,940	\$4,137	\$4,343	\$4,561	\$4,789	\$4,789	\$4,147
Sonoma	\$6,786	\$7,125	\$7,482	\$7,856	\$8,248	\$8,661	\$8,661	\$7,500
Stanislaus	\$6,786	\$7,125	\$7,482	\$7,856	\$8,248	\$8,661	\$8,661	\$7,500
TOTAL	\$188,653	\$198,086	\$207,990	\$218,389	\$229,309	\$240,774	\$224,440	\$184,362

*The Maritime Academy does not participate due, in part, to an extremely limited social science curriculum. Pomona chose not to subscribe in 2016-17 and has become inactive. Chico did not subscribe in 2018-2019.

Baseline Indicators of Activities and Outcomes

Table 3. Faculty Support: Activities and Outcomes		
SSRIC supports CSU faculty in their professional research and instructional programs.		2018-2019
ACTIVITY: SSRIC organizes an annual membership of representatives drawn from its 20 CSU campuses.		
1.	Coordinates the selection of at least one (1) representative per participating campus (N=20) on SSRIC. Number of representatives including alternates and at-large members.	27
2.	Manages the access for the twenty-one CSU campuses subscribing to three (3) databases including ICPSR, Field, and Roper. Number of campuses.	20
3.	Updates its social science email distribution list used for communications with the twenty-one CSU campuses. Number of SSRIC email contacts.	1,090
4.	Provides an analysis of database usage, including the number and volume of downloads, the number of online access visits, the number of faculty and student ICPSR accounts, and self-reported classroom uses of databases for instruction.	
	Number of ICPSR File downloads	71,696
	Dataset Downloads Volume of ICPSR	21,891
	Downloads (Gigabytes)	753.1
	ICPSR Dataset Accesses using SDA ¹ (Survey Documentation and Analysis)	1,637
5.	Distributes an Annual Activity and Usage Report to the SSRIC Representatives and the Assistant Vice Chancellor for Research Initiatives and Partnerships; and share this report with the twenty-two (22) campus presidents within 90 days of the end of each fiscal year.	Yes

¹ SDA is an online program developed at University of California, Berkeley that allows individuals to access studies that have been set up for this program.

Table 4. Student Success: Activities and Outcomes

Table 4. Student Success: Activities and Outcomes		2018-2019
SSRIC supports CSU students in their social science studies.		
ACTIVITY: SSRIC supports opportunities for enhancing student success through its website and the Social Science Student Symposium (S ⁴).		S4 44th
1.	Disseminates promotional messages to increase the number of visits to the SSRIC	Yes
2.	Solicits undergraduate and graduate student participation in the S ⁴ <p style="text-align: right;">Registrations 61 Total Participants 94 Undergraduates 42 Graduates 19 Presentations 55 Co-authors, Non-presenters 3 Campuses Represented at the Symposium 15</p>	
3.	Increase student usage of the databases among those who are S ⁴ presenters. When asked, “Did you collect and present original research data or did you conduct secondary analysis?”, students answered: <p style="text-align: right;">Used original data 43% Used secondary data 54% Did not use any data (Post S⁴ Evaluation Survey N=27) 3%</p>	
4.	Promotes S ⁴ student presenters to publish their research findings. When asked, “Do you intend to submit your research paper for publication within the next year” <p style="text-align: right;">Students who answered “Likely” or “very Likely” 56.8% Students who answered “Neither likely nor unlikely” 21.6% Students who answered “No”. 21.6%</p>	
5.	Increases number of faculty who participate/attend the S ⁴ . <p style="text-align: right;">Number of faculty attending, serving as session moderators 18 Awards/paper review committee representatives 5</p>	

Table 5. Faculty Support and Student Success: Activities and Outcomes

SSRIC provides students and faculty access to social science resources.		2018-2019
ACTIVITY: SSRIC promotes the Social Science resources through its website, workshops, newsletters and direct email announcements and Social Science Student Symposium (S ⁴).		
1.	Update and advance the usage of the SSRIC Website. Total number of website pageviews Number of website unique pageviews Average minutes spent on website page	<i>unk</i> ¹ <i>unk</i> <i>unk</i>
2.	Update and further the online availability of teaching resources. SSRIC Website: www.ssrlic.org Website teaching module Website exercises Online textbooks Instructional data subsets Links to other instructional sites	5 86 3 24 89
3.	Provide at least three training opportunities such as face-to-face, webinars, workshops and online programs. SSRIC Website Teaching Resources www.ssrlic.org Total resources website pageviews Resources website unique pageviews Average time on resources page CSU workshops for faculty/students CSU demonstrations faculty/students CSU workshop/demonstration participants	<i>unk</i> <i>unk</i> <i>unk</i> 0 1 22
4.	Publish the semi-annual SSRIC e-newsletter to SSRIC representatives, who forward the e-newsletter into their campus community. Newsletters published.	2
5.	Publicize SSRIC services/activities and new survey/database offerings via email announcements (6 to 12 per year) to SSRIC representatives, who forward the messages into their campus community. ICPSR announcements distributed to representatives Symposium flyers produced	20 1

¹ *unk* = unknown: As of 9/30/19, we are still awaiting a requested report of the website usage statistics from SF State staff administering the site. When we receive this information, we will forward the amended report with usage statistics specified.

Appendix: SSRIC Annual Data Usage and Service Report

Dr. Regan Maas, Chair

Department of Geography and Environmental Studies
CSU, Northridge
regan.maas@csun.edu

Dr. Chris Den Hartog, SSRIC Chair-Elect

Department of Political Science
CSU, San Luis Obispo
cdenhart@calpoly.edu

Contents

Introduction.....	19
Data	20
ICPSR Usage	20
ICPSR Dataset Downloads by Files and Size.....	20
Table A1: Number of Total Data Sets Downloaded	21
Table A2: Number of Total Gigabytes Downloaded.....	22
ICPSR Survey Documentation and Analysis (SDA).....	23
Table A3: Number of SDA Datasets Accessed.....	23
Social Science Student Symposium (S ⁴).....	24
Table A4: Number of Student Presentations and Participating Campuses.....	24
Social Science Research and Instructional Center Website	25

Introduction

The Social Science Research and Instructional Council (SSRIC) is a collaboration of 20 CSU campuses with administrative support from the CSU Chancellor's Office. Founded in 1972, SSRIC is the oldest of the discipline councils in the California State University system. With representatives from each of the CSU campuses, the Council assists learning, teaching and research in the social sciences through access to archival database resources as well as an online repository of teaching materials, a student research symposium, and workshops for faculty. In 2016, the SSRIC became one of nine officially recognized affinity groups within the CSU that was engaged in multi-campus collaboration.

With representation and guidance from the 20 participating campuses, the SSRIC:

- Facilitates access to social science database subscriptions and online resources, including instructionally-related and research-related materials.
- Works with the Chancellor's Office and data providers to obtain these high-quality resources at a reasonable cost to the campuses.
- Promotes quantitative social science research by students via its annual Social Science Student Symposium (S⁴).
- Provides opportunities for training and professional development of faculty, staff, and students through teaching, research, scholarly, and creative activities.
- Provides a forum for sharing information about social science data and computer products.
- Advises CSU administrators on policies related to providing quantitative social science data for research and instruction, while advancing best practice across campuses.
- Represents the collective interests of the CSU campuses to external stakeholders on matters pertaining to social science research and instruction.

The teaching resources section of the website includes exercises, modules, and online textbooks. In 2015-16, these materials were viewed **34,338** times. In 2016-17, they were viewed **32,165** times. In 2017-2018 these materials were accessed **38,607** times. In 2018-2019, these materials were accessed in an amount similar to the previous year².

Data

The SSRIC is the CSU systems' clearinghouse for social science data, notably data from the Inter-university Consortium for Political and Social Research (ICPSR), CALSPEAKS. These sources provide data to support quantitative social science teaching, research and service by students, staff and faculty, and well as sponsored programs and grant development by CSU research centers.

All the functions described above are performed by faculty representatives as a professional service. Dues requested of individual campuses primarily defray data subscription costs.

ICPSR Usage

The Inter-university Consortium for Political and Social Research (ICPSR) is the largest social science data repository in the world. It is the primary source of social science data for every research-oriented university and nearly every other university and college in the United States. Data access is online and interactive under the *ICPSR Direct* system. The following table summarizes utilization by campus from 2008-2009 through 2018-2019.

ICPSR Dataset Downloads by Files and Size

During academic year 2018-19, 21,891 datasets (753.1 gigabytes of data) were downloaded from ICPSR by CSU students, faculty, and staff. These totals represent an increase in usage from prior years.

In addition, usage data always requires one important proviso. A single download may be used in a class with many students, but only shows on the usage chart as a single download. Additionally, a single faculty member may download a study to be used for research by multiple faculty members.

² As of 9/30/19, we are still awaiting a requested report of the specific website usage statistic values from SF State staff administering the site. When we receive this information, we will forward the amended report with the specific access value.

Table A1: Number of Total Data Sets Downloaded

	08-09	09-10	10-11	11-12	12-13	13-14	14-15	15-16	16-17	17-18	18-19
Bakersfield	737	124	2,429	1,221	377	138	393	197	9	7	12
Channel Islands	129	122	11	55	11	45	26	380	347	999	905
Chico	516	556	350	398	324	392	375	226	445	430	1,215
Dominguez Hills	14	19	16	3	2	340	34	51	2	2	3
East Bay	512	460	231	92	27	7	138	9	5	16	79
Fresno	99	69	248	187	167	445	1,135	1,423	921	1,090	2,584
Fullerton	724	755	1,109	1,342	245	1,061	1,649	901	1,176	1,116	4,436
Humboldt	124	335	160	436	61	37	123	43	94	336	246
Long Beach	927	1,736	664	482	1,040	1,664	1,234	443	419	898	1,328
Los Angeles	346	1,335	441	448	105	27	130	58	301	2,475	1,815
Monterey Bay	5	16	81	142	60	0	6	2	6	580	8
Northridge	2,955	6,490	1,597	2,276	682	2,676	1,123	3,068	2955	1,505	2,325
Pomona	525	246	354	73	258	521	8	1,224	2	0	0
Sacramento	653	1,170	891	1,289	521	380	309	516	454	234	1,648
San Bernardino	42	575	873	247	54	95	32	79	26	209	463
San Diego	612	1,816	1,749	1,012	910	271	539	645	810	723	948
San Francisco	1,130	71	387	287	161	106	1,643	141	329	206	744
San Jose	*	119	164	221	33	58	84	142	159	1,185	323
San Luis Obispo	361	35	2	232	165	59	256	426	101	78	578
San Marcos	187	350	302	542	103	83	534	309	98	1,479	2,151
Sonoma	36	54	400	71	36	53	30	9	1		4
Stanislaus	72	333	2,906	187	182	306	87	295	44	25	75
Total	10,706	16,786	15,365	11,243	5,524	8,764	9,888	10,587	8,704	13,594	21,891

Table A2: Number of Total Gigabytes Downloaded

	10-11	11-12	12-13	13-14	14-15	15-16	16-17	17-18	18-19
Bakersfield	62.6	18.6	13.9	9.0	75.5	17.3	0.3	2.8	.254
Channel Islands	0.4	81.0	1.8	20.6	5.5	31.0	20.5	71.8	34.7
Chico	22.2	30.6	30.4	38.7	43.0	33.2	54.8	21.1	78.1
Dominguez Hills	1.8	0.8	0.2	9.9	6.0	5.2	0.01	0.0	.031
East Bay	3.6	5.5	2.2	0.7	3.7	0.1	0.9	1.6	2.40
Fresno	9.0	18.7	14.0	22.7	132.7	73.3	86.1	36.0	128.8
Fullerton	19.8	50.0	21.9	133.8	75.5	129.9	56.8	64.1	138.8
Humboldt	4.2	7.5	4.2	1.4	3.4	8.7	2.7	3.9	19.3
Long Beach	43.8	20.4	65.7	90.1	84.9	31.4	49.8	29.1	31.0
Los Angeles	11.6	14.1	44.4	1.3	21.6	14.0	45.6	52.6	51.2
Monterey Bay	5.9	20.2	2.4	0.0	0.0	0.0	10.9	33.4	.124
Northridge	64.0	100.0	24.6	118.1	76.1	278.9	238.3	344.0	83.0
Pomona	7.6	0.5	87.9	27.6	0.7	10.1	0.0	0.0	0.0
Sacramento	73.7	107.1	40.6	30.2	30.7	107.2	45.1	26.9	30.7
San Bernardino	29.9	15.6	4.7	2.6	1.4	3.9	2.4	19.5	12.4
San Diego	36.7	82.5	78.2	17.2	52.9	72.2	76.6	146.4	19.3
San Francisco	41.9	9.2	3.9	10.4	46.1	12.8	12.4	8.0	23.3
San Jose	10.1	52.3	4.5	3.6	5.5	10.5	13.9	72.2	12.2
San Luis Obispo	0.1	16.0	4.8	2.2	22.3	21.0	13.2	5.7	3.1
San Marcos	28.9	26.6	16.0	20.1	41.0	26.8	6.1	65.6	68.5
Sonoma	37.4	2.8	2.5	1.4	1.5	0.9	0.0	0.0	1.4
Stanislaus	91.2	5.4	16.6	7.1	1.5	4.0	1.7	1.8	3.8
Total	606.4	685.4	485.2	568.7	731.3	892.4	738.2	1,006.5	753.1

ICPSR Survey Documentation and Analysis (SDA)

ICPSR maintains an archive of nearly 800 data sets that use SDA (Survey Documentation and Analysis) which was written at UC Berkeley. SDA is an online program that allows individuals to access studies that have been set up for this program. The table below shows the number of times that SDA data files in the ICPSR were accessed by CSU campuses.

Table A3: Number of SDA Datasets Accessed

Fiscal year	Number of datasets accessed
2007-08	1,310
2008-09	1,454
2009-10	1,501
2010-11	1,311
2011-12	2,611
2012-13	1,531
2013-14	1,687
2014-15	1,845
2015-16	1,457
2016-17	1,341
2017-18	1,353
2018-19	1,637

Social Science Student Symposium (S⁴)

The SSRIC sponsors an annual student symposium for both undergraduates and graduates where students can present their research in a supportive setting. For many students, this is their first opportunity to present their research at a professional conference. The symposium rotates between northern and southern campuses each year.

Students can compete for awards by submitting a research paper and presenting at the symposium. Over the past three years, student symposium participation has increased, in part, due to the generous financial support from Dr. Gene Geisler—professor emeritus of political science at San Francisco State and who is one of the council’s founders. These funds (\$20,000 for each of the past three years) provide for the SSRIC student paper awards and student travel.

The 2019 symposium was held at San Francisco with 67 presentations from 14 participating campuses. The following table summarizes student symposium activity for the years 2007-2019.

Table A4: Number of Student Presentations and Participating Campuses

Year	Host Campus	Student Presentations	CSU Campuses Participating
2007	East Bay	36	13
2008	Long Beach	47	8
2009	Sacramento	43	12
2010	Pomona	33	9
2011	San Jose	14	4
2012	Los Angeles	52	9
2013	San Francisco*	30	8
2014	Fullerton	79	16
2015	Sacramento	72	16
2016	San Diego	63	13
2017	Fresno	40	18
2018	Long Beach	58	14
2019	San Francisco	67	14

Social Science Research and Instructional Center Website

The SSRIC Web site is online at www.ssrlic.org. The site consolidates and expands information previously scattered on servers at the Bakersfield, Los Angeles, and Pomona campuses. The new site makes it much easier to communicate information about resources, events, and services provided to students, faculty, and staff through the Council. The site offers among other things:

- ☐ Announcements of upcoming events
- ☐ Contact list of Council representatives from each campus
- ☐ Information for research-oriented social science faculty throughout the CSU
- ☐ Comprehensive information about the annual Social Science Student Symposium (S⁴)
- ☐ Instructions for downloading ICPSR data
- ☐ Information about the Field Faculty Fellowship program
- ☐ Information about the ICPSR Summer Program
- ☐ Links to various sites that have useful research information
- ☐ Curriculum materials contained in the SSRIC Teaching Resources, including various modules and exercises and an SPSS primer for versions 23 and 25
- ☐ Curriculum materials contained in POWERMUTT, an online text for teaching research methods in political science and cognate disciplines